

The Compact Automation Difference

Compact Automation designs and manufactures high-value pneumatic and hydraulic actuation products for original equipment manufacturers, integrators and plant engineers. These are premium products for those who demand the best possible performance and durability.

The Compact Automation Value Proposition:

- Small but Powerful
- Long-Life and Repairable
- Highly Configurable



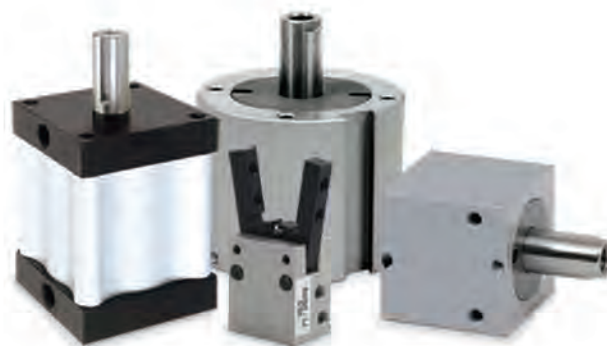
Small, Durable and Configurable
Products for all of your Critical
Motion Control Needs.

COMPACT[®]
AUTOMATION PRODUCTS

Compact Automation Products
105 Commerce Way
Westminster, SC, 29693
Tel.: 864.647.9521
Fax: 864.647.9574
www.compactautomation.com

Option	Bimba	Fabco	Festo	Nason	Numatics	PHD	SMC	CAP
Total Available Standard Options	26	41	34	28	19	17	18	66
Heavy Duty		•	•	•	•	•		•
Round		•						•
Square		•	•	•		•		•
Switch Ready	•	•	•	•	•	•	•	•
Base Mount		•		•	•			•
End Brackets			•	•		•	•	•
Front Flange		•	•	•	•		•	•
Long Pivot								•
Nose Mount	•	•						•
Pivot Shaft								•
Rear Flange		•	•	•	•		•	•
Side Bracket		•		•	•	•	•	•
Short Pivot								•
Rear Clevis	•	•	•	•	•	•	•	•
Rear Clevis w/ Eye Mount				•		•	•	•
Eye Mount		•	•		•	•		•
Right Angle Clevis			•					•
Thru Mount	•	•		•				•
Threads Both Ends	•	•	•	•				•
Threads Front	•	•	•	•				•
Threads Rear	•	•	•	•				•
Rod Clevis		•	•		•	•		•
Rod Extension (single)	•	•	•	•	•	•		•
Rod Extension (double)		•	•					•
Rod Extension Front (double)		•	•	•				•
Rod Extension Rear (double)		•		•				•
Fine Thread Rod Tap								•
Blind Rod End	•					•		•
Metric Rod Tap		•	•	•				•
Hollow Rod (no threads)								•
Hollow Rod (std threads)	•	•	•					•
Hollow Rod (pipe threads)								•
Oversized Rod					•			•
Male Stud	•	•	•	•		•	•	•
Fine Thread Male Stud	•					•		•
Non-Rotating		•	•					•
Aluminum Rod			•					•
Rod Eye			•	•	•			•
Rod Wiper	•		•					•
Viton Rod Wiper								•
Rod Scraper							•	•
Rod Lock			•					•
Adjustable Stroke (retract)		•					•	•
Adjustable Stroke (extend)							•	•
Positive Alignment							•	•
Cushions - Both Ends		•		•		•		•
Cushions - Front		•		•				•
Cushions - Rear		•		•				•
Bumpers - Both Ends	•	•			•			•
Bumpers - Front	•	•						•
Bumpers - Rear	•	•						•
Oversized Ports				•				•
Oversized Orifices								•
Low Friction Seals	•		•					•
High Temperature Seals	•	•	•	•	•	•	•	•
Corrosion Resistant Seals			•					•
Ethylene Propylene Seals			•					•
Hydraulic Seals		•		•				•
High Temperature Hydraulic Seals								•
Quad Seals	•	•						•
3452 Molykote Lubricant	•							•
3451 Molykote Lubricant								•
Krytox Lubricant								•
Magnalube Teflon Lubricant	•	•						•
DOW 33 Lubricant							•	•
Nye 8132S Lubricant			•					•
Nye 8512S Lubricant								•
Parker Super Lube								•
Plastic Bushings, HF 362 Lubricant								•
Port Position Change	•	•			•			•
Dual Ports								•
Spring Return	•		•		•		•	•
Spring Extend		•	•		•		•	•
Stainless Steel Construction								•
Switch Mounting Location Change	•		•				•	•
Front Trunion Mount	•	•	•					•
Rear Trunion Mount	•	•	•					•
Electroless Nickel Plating		•			•			•
Stainless Rod	std	std	std	std	•	•	std	std

The Most Standard Options Available in the Industry!



Compact Automation supplies premium actuation products to customers that demand the best in performance. We deliver the exact product that our customers need for their most challenging applications and critical tasks. This is the reason Compact Automation offers more standard options than any other company in the automation industry. Just compare for yourself and experience the Compact Automation difference!

COMPACT[®]
AUTOMATION PRODUCTS

Compact Automation Products
105 Commerce Way
Westminster, SC, 29693
Tel.: 864.647.9521
Fax: 864.647.9574
www.compactautomation.com