

**FINGER OPTIONS** — Finger Inserts below can be mounted to Master Jaws on gripper using 1 screw. By turning and positioning, each finger can be attached in numerous variations.

**“L” SHAPED FINGER OPTION “LF”**

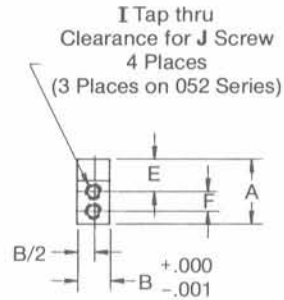
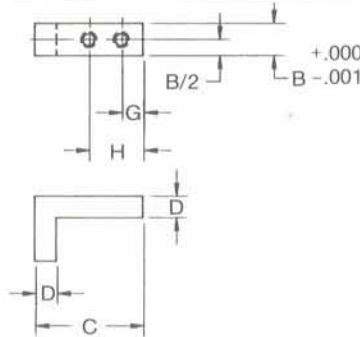
**TOOLING ONLY**

To order a “set” of jaws only:

Specify: **F 112 PLF**

Series  
required

See below to order attached to gripper



Gripper Series	Bore (Ref.)	A	B	C	D	E	F	G	H	I	J
052	1/2"	1/2	.249	1.0	1/8	1/4	0	3/16	1/2	#8-32	#4
072	3/4"	3/4	.374	1-1/4	1/4	3/8	7/32	1/4	5/8	#10-24	#6
112	1-1/8"	1.0	.499	1-1/4	1/4	1/2	9/32	1/4	5/8	#10-24	#6
132	1-3/8"	1-1/4	.624	1-1/2	3/8	5/8	11/32	1/4	11/16	#1/4-20	#10
162	1-5/8"										
202	2"										

**NOTES:**

- #1** Several mounting options for different open and closed positions.
- #2** Fingers made of "1018" Steel
- #3** Mounting screws are provided

**ORDERING INSTRUCTIONS**

STYLE	
DESCRIPTION	CODE
Parallel Square Barrel (End Mount) Gripper	PSG
Parallel Square Barrel (Side Mount) Gripper	PBG

JAW TRAVEL	CODE
1/8"	18
1/4"	14
1/2"	12
3/4"	34

OPTIONS	
DESCRIPTION	CODE
Adjustment Closed	ADJC
Adjustment Open	ADJO
Other options available refer to catalog COMPACT	

**A**  
MAGNETIC PISTON  
(OPTIONAL)

**PBG**  
STYLE

**072**  
BORE

**12**  
JAW TRAVEL

**LF**  
JAW STYLE  
(OPTIONAL)

**ADJC**  
(OPTIONAL)

MAGNETIC PISTON	
DESCRIPTION	CODE
Magnetic piston Cylinder and sensor mounting rail	A

BORE	CODE
1/2"	052
3/4"	072
1-1/8"	112
1-3/8"	132
1-5/8"	162
2"	202

JAW OPTION	
DESCRIPTION	CODE
L Shape jaw	LF